

SPEC SHEET

Specifications

Engine

Model _____ Tier 4 interim certified ISUZU AM-4HK1X
 Type _____ Water-cooled, 4-cycle diesel, 4-cylinder in line,
 High pressure common rail system (electric control), Turbocharger
 with air cooled intercooler, DPD system
 Number of cylinders _____ 4
 Bore/Stroke _____ 115 x 125 mm
 Horsepower ISO 9249 _____ 119.3 kW at 1800 min⁻¹
 Maximum torque ISO 9249 _____ 621 Nm at 1500 min⁻¹

Hydraulic system

Max oil flow _____ 2 x 211 l/min @ 1800 min⁻¹
 2 variable displacement axial piston pumps with regulating system
 Working circuit pressure _____
 Boom/Arm/Bucket _____ 34.3 MPa
 Boom/Arm/Bucket (with auto power up) _____ 36.4 MPa
 Swing circuit _____ 29.4 MPa
 Travel circuit _____ 34.3 MPa

Swing

Maximum swing speed _____ 11.8 min⁻¹

Travel

Travel motor _____ Variable displacement axial piston motor
 Max travel speed _____ 5.0 km/h (Automatic travel speed shifting)
 Low travel speed _____ 3.2 km/h
 Gradeability _____ 70% (35°)
 Drawbar pull _____ 201 kN

Electrical system

Circuit _____ 24 V
 Alternator _____ 50 Amp

Undercarriage

Number of carriers rollers (each side) _____ 2
 Number of track rollers (each side) _____ 8
 Number of shoes (each side) _____ 49
 Type of shoe _____ Triple grouser shoe

Capacities

Fuel tank _____ 320 l
 Hydraulic system _____ 252 l
 Cooling system _____ 30.9 l

Weight and ground pressure

With 2.40 m Arm , 1.0 m³ bucket, operator, lubricant, coolant, full fuel tank

CX235C SR BLADE	Weight (kg)	Ground pressure (MPa)
600 mm grouser shoe	25.200	0.056

With 2.40 m Arm , 1.0 m³ bucket, operator, lubricant, coolant, full fuel tank

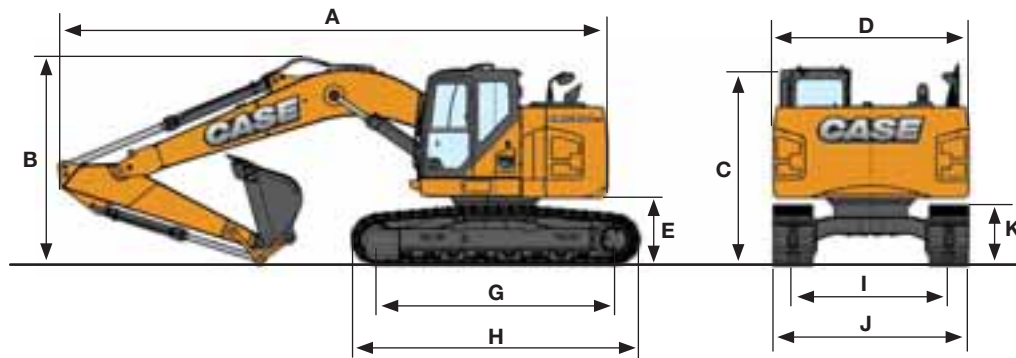
CX235C SR LC	Weight (kg)	Ground pressure (MPa)
600 mm grouser shoe	24.100	0.050

CX C-SERIES HYDRAULIC EXCAVATORS

CX235C SR - CX235C SR LC

TIER 4 INTERIM

General dimensions



Arm 2.40 m

Arm 1.90 m HD

Arm 2.94 m

	Arm 2.40 m	Arm 1.90 m HD	Arm 2.94 m
Overall length (without attachment)	4470 mm	4470 mm	4470 mm
A Overall length (with attachment)	8920 mm	8940 mm	8830 mm
B Overall height (with attachment)	3180 mm	3100 mm	3090 mm
C Cab height	3140 mm	3140 mm	3140 mm
D Upper structure overall width	2990 mm	2990 mm	2990 mm
Swing (rear end) radius	1720 mm	1720 mm	1720 mm
E Clearance height under upper structure	1020 mm	1020 mm	1020 mm
F Minimum ground clearance	440 mm	440 mm	440 mm
G Wheel base (Center to center of wheels)	3660 mm	3660 mm	3660 mm
H Crawler overall length	4470 mm	4470 mm	4470 mm
I Track gauge	2390 mm	2390 mm	2390 mm
J Undercarriage overall width (with 600 mm shoes)	2990 mm	2990 mm	2990 mm
K Crawler tracks height	920 mm	920 mm	920 mm

CX235C SR BLADE

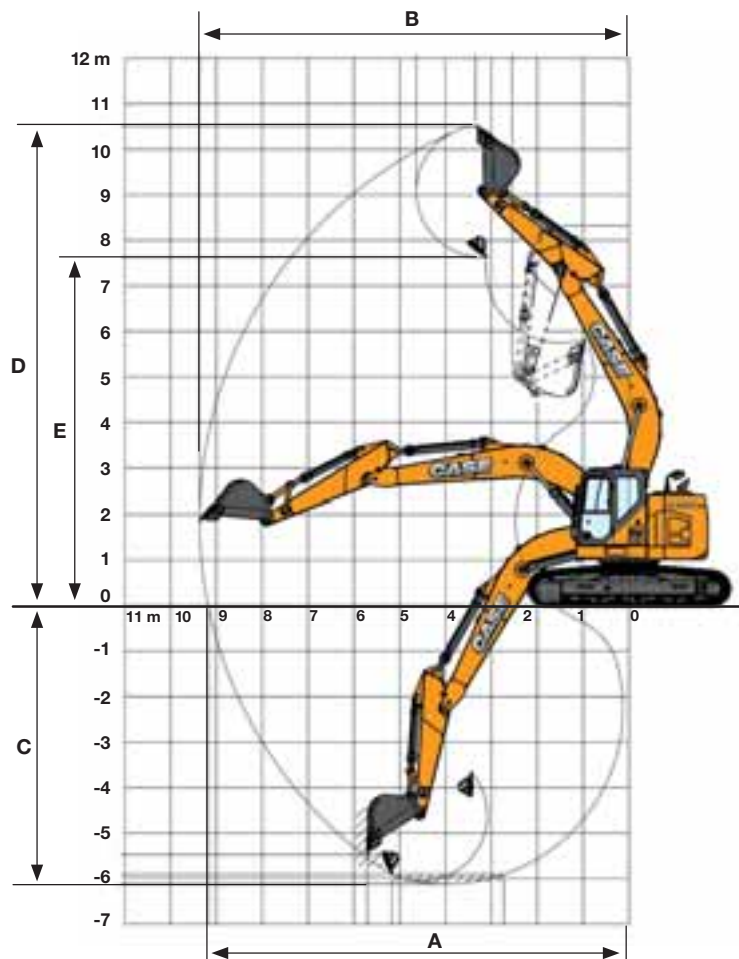
Arm 2.40 m

Arm 1.90 m HD

Arm 2.94 m

	Arm 2.40 m	Arm 1.90 m HD	Arm 2.94 m
Overall length (without attachment)	4700 mm	4700 mm	4700 mm
A Overall length (with attachment)	9300 mm	9320 mm	9210 mm
B Overall height (with attachment)	3180 mm	3100 mm	3090 mm
C Cab height	3000 mm	3000 mm	3000 mm
D Upper structure overall width	2990 mm	2990 mm	2990 mm
Swing (rear end) radius	1720 mm	1720 mm	1720 mm
E Clearance height under upper structure	1020 mm	1020 mm	1020 mm
F Minimum ground clearance	440 mm	440 mm	440 mm
G Wheel base (Center to center of wheels)	3370 mm	3370 mm	3370 mm
H Crawler overall length	4180 mm	4180 mm	4180 mm
I Track gauge	2200 mm	2200 mm	2200 mm
J Undercarriage overall width (with 600 mm shoes)	2800 mm	2800 mm	2800 mm
K Crawler tracks height	920 mm	920 mm	920 mm

Performance data



CX235C SR LC/CX235C SR BLADE

Arm 2.40 m

Arm 1.90 m HD

Arm 2.94 m

	Arm 2.40 m	Arm 1.90 m HD	Arm 2.94 m
Boom length	5700 mm	5700 mm	5700 mm
Bucket radius	1450 mm	1450 mm	1450 mm
Bucket wrist action	177°	177°	177°
A Maximum reach at GRP	9180 mm	8710 mm	9670 mm
B Maximum reach	9370 mm	8910 mm	9850 mm
C Max. digging depth	6120 mm	5620 mm	6650 mm
D Max. digging height	10520 mm	10170 mm	10860 mm
E Max. dumping height	7630 mm	7280 mm	7970 mm

Digging force

With 1.0 m³ bucket (ISO 6015)

CX235C SR LC/CX235C SR BLADE

Arm 2.40 m

Arm 1.90 m HD

Arm 2.94 m

	Arm 2.40 m	Arm 1.90 m HD	Arm 2.94 m
Arm digging force	123 kN	142 kN	103 kN
- with auto power up	132 kN	152 kN	110 kN
Bucket digging force	142 kN	142 kN	142 kN
- with auto power up	152 kN	152 kN	152 kN

CX C-SERIES HYDRAULIC EXCAVATORS

CX235C SR - CX235C SR LC

TIER 4 INTERIM

Lifting capacity

Front 360°	REACH						
	1.5 m	3.0 m	4.5 m	6.0 m	7.5 m	9.0 m	At max reach m

CX235C BLADE. Version S-Short arm. 1.91 m arm length, 1.00 m³ bucket, 600G shoes, max reach 8.57 m - Blade down

9.0 m												4630*	4630*	4.36
7.5 m				4830*	4830*	4890 *	4890 *					4020*	4020*	6.46
6.0 m				5810*	5810*	5140 *	4940	4420 *	3310			3810*	3230	7.59
4.5 m			9690 *	9690 *	7310*	7310*	5580 *	4740	5160 *	3250		3790*	2720	8.24
3.0 m					8850*	7010	6740 *	4490	5590 *	3130		3900*	2490	8.54
1.5 m					10100*	6540	7430 *	4270	5890 *	3020		4140*	2440	8.53
0 m			7290 *	7290 *	10550*	6330	7680 *	4120	5960 *	2940		4580*	2550	8.25
-1.5 m	7760 *	7760*	12030 *	12030 *	10270*	6370	7550 *	4110	5620 *	2980		5340*	2880	7.65
-3.0 m	12950 *	12950*	12780 *	12580	9220*	6520	6700 *	4260				5340*	3600	6.67
-4.5 m			9370 *	9370 *	6670*	6630						5170*	5170*	5.15

CX235C BLADE. Version S-Short arm. 1.91 m arm length, 1.00 m³ bucket, 600G shoes, max reach 8.57 m - Blade up

9.0 m												4630*	4630*	4.36
7.5 m					4830*	4830*	4890 *	4780				4020*	4020*	6.46
6.0 m					5810*	5810*	5140 *	4720	4420 *	3150		3810*	3080	7.59
4.5 m			9690 *	9690 *	7310*	7090	5880 *	4520	4750	3090		3790*	2580	8.24
3.0 m					8850*	6660	6610	4280	4630	2980		3710	2360	8.54
1.5 m					10100*	6200	6410	4060	4510	2860		3660	2310	8.53
0 m			7290 *	7290 *	9940	5990	6250	3910	4430	2790		3840	2420	8.25
-1.5 m	7760 *	7760*	12030 *	11420	9950	6030	6230	3900	4470	2830		4320	2730	7.65
-3.0 m	12950 *	12950*	12780 *	11960	9220*	6180	6310	4050				5340*	3420	6.67
-4.5 m			9370 *	9370 *	6670*	6330						5170*	5170*	5.15

CX235C LC. Version S-Short arm. 1.91 m arm length, 1.00 m³ bucket, 600G shoes, max reach 8.57 m

9.0 m												4630*	4630*	4.36
7.5 m					4830*	4830*	4890 *	4890 *				4020*	4020*	6.46
6.0 m					5810*	5810*	5140 *	4690	4420 *	3320		3810*	3240	7.59
4.5 m			9690 *	9690 *	7310*	7310*	5880 *	4760	5160 *	3250		3790*	2720	8.24
3.0 m					8850*	7080	6740 *	4520	5090	3140		3900*	2490	8.54
1.5 m					10100*	6610	7110	4290	4970	3020		4040	2440	8.53
0 m			7290 *	7290 *	10550*	6390	6940	4140	4890	2950		4230	2550	8.25
-1.5 m	7760 *	7760*	12030 *	12030 *	10270*	6430	6910	4130	4930	2980		4770	2880	7.65
-3.0 m	12950 *	12950*	12780 *	12780	9220*	6580	6700 *	4280				5340*	3610	6.67
-4.5 m			9370 *	9370 *	6670*	6670*						5170*	5170*	5.15

* Hydraulic capacity 87%

Lifting capacity

Front 360°	REACH												
	1.5 m		3.0 m		4.5 m		6.0 m		7.5 m		9.0 m		At max reach

CX235C BLADE. Version Short arm. 2.40 m arm length, 1.00 m³ bucket, 600G shoes, max reach 9.03 m - Blade down

9.0 m					3510*	3510*									3730*	3730*	5.32
7.5 m					3660*	3660*	4380*	4380*							3250*	3250*	7.08
6.0 m					5130*	5130*	4910*	4860	4430*	3350					3090*	2860	8.12
4.5 m			8360*	8360*	6610*	6610*	5450*	4780	4910*	3260					3070*	2440	8.72
3.0 m			10110*	10110*	8490*	7130	6380*	4520	5280*	3130	3170*	2240			3160*	2240	9
1.5 m					9890*	6600	7170*	4270	5700*	2990					3360*	2190	9
0 m			7670*	7670*	10490*	6300	7580*	4090	5890*	2900					3710*	2280	8.72
-1.5 m	8000*	8000*	11280*	11280*	10350*	6280	7550*	4040	5780*	2880					4330*	2540	8.16
-3.0 m	11260*	11260*	13740*	12600	9610*	6390	7030*	4130							5060*	3090	7.25
-4.5 m			10860*	10860*	7710*	6590									4990*	4390	5.87

CX235C BLADE. Version Short arm. 2.40 m arm length, 1.00 m³ bucket, 600G shoes, max reach 9.03 m - Blade up

9.0 m					3510*	3510*									3730*	3730*	5.32
7.5 m					3660*	3660*	4380*	4380*							3250*	3250*	7.08
6.0 m					5130*	5130*	4910*	4690	4430*	3190					3090*	2720	8.12
4.5 m			8360*	8360*	6610*	6610*	5450*	4560	4740*	3100					3070*	2310	8.72
3.0 m			10110*	10110*	8490*	6780	6380*	4300	4630	2970	3170*	2120			3160*	2120	9
1.5 m					9890*	6260	6420	4060	4490	2840					3330	2070	9
0 m			7670*	7670*	9910	5960	6220	3880	4380	2470					3470	2150	8.72
-1.5 m	8000*	8000*	11280*	11200	9870	5940	6150	3830	4370	2730					3850	2400	8.16
-3.0 m	11260*	11260*	13740*	11930	9610*	6050	6240	3920							4660	2930	7.25
-4.5 m			10860*	10860*	7710*	6280									4990*	4170	5.87

CX235C LC. Version Short arm. 2.40 m arm length, 1.00 m³ bucket, 600G shoes, max reach 9.03 m

9.0 m					3510*	3510*									3730*	3730*	5.32
7.5 m					3660*	3660*	4380*	4380*							3250*	3250*	7.08
6.0 m					5130*	5130*	4910*	4880*	4430*	3360					3090*	2860	8.12
4.5 m			8360*	8360*	6610*	6610*	5450*	4810	4910*	3270					3070*	2440	8.72
3.0 m			10110*	10110*	8490*	7200	6380*	4540	5100	3130	3170*	2240			3160*	2240	9
1.5 m					9890*	6660	7070	4290	4950	3000					3360*	2190	9
0 m			7670*	7670*	10490*	6360	6910	4140	4840	2900					3710*	2280	8.72
-1.5 m	8000*	8000*	11280*	11280*	10350*	6340	6840	4050	4830	2890					4250	2540	8.16
-3.0 m	11260*	11260*	13740*	12850	9610*	6450	6860	4140							5060*	3100	7.25
-4.5 m			10860*	10860*	7710*	6650									4990*	4410	5.87

CX C-SERIES HYDRAULIC EXCAVATORS

CX235C SR - CX235C SR LC

TIER 4 INTERIM

Lifting capacity

Front 360°	REACH											
	1.5 m	3.0 m	4.5 m	6.0 m	7.5 m	9.0 m	At max reach		m			

CX235C BLADE. Version Standard arm. 2.94 m arm length, 0.90 m³ bucket, 600G shoes, max reach 9.51 m - Blade down

9.0 m								2930 *	2930 *					2490*	2490*	6.17
7.5 m								3980 *	3980 *	2850 *	2850 *			2190*	2190*	7.71
6.0 m								4430 *	4430 *	4020 *	3460			2090*	2090*	8.66
4.5 m			4990 *	4990 *	5680*	5680*	5000 *	4880 *	4610 *	3360	2980*	2380	2080*	2080*	9.22	
3.0 m			10960 *	10960 *	7890*	7300	6050 *	4640	5050 *	3210	4000	2310	2150*	2080	9.49	
1.5 m			8870 *	8870 *	9600*	6790	6940 *	4370	5570 *	3060	4430*	2240	2290*	2040	9.48	
0 m			8500 *	8500 *	10440*	6410	7520 *	4160	5880 *	2940	3850*	2190	2530*	2100	9.22	
-1.5 m	7310 *	7310*	10920 *	10920 *	10470*	6290	7610 *	4060	5880 *	2890			2950*	2310	8.69	
-3.0 m	9960 *	9960*	14670 *	12570	10020*	6360	7330 *	4100	5440 *	2960			3720*	2740	7.85	
-4.5 m	14280 *	14280*	12330 *	12330 *	8610*	6570	6120 *	4330					4940*	3660	6.58	

CX235C BLADE. Version Standard arm. 2.94 m arm length, 0.90 m³ bucket, 600G shoes, max reach 9.51 m - Blade up

9.0 m								2930 *	2930 *					2490*	2490*	6.17
7.5 m								3980 *	3980 *	2850 *	2850 *			2190*	2190*	7.71
6.0 m								4430 *	4430 *	4020 *	3300			2090*	2090*	8.66
4.5 m			4990 *	4990 *	5680*	5680*	5000 *	4700	4610 *	3200	2980*	2260	2080*	2080*	9.22	
3.0 m			10960 *	10960 *	7890*	7000	6050 *	4420	4720	3050	3460	2190	2150*	1970	9.49	
1.5 m			8870 *	8870 *	9600*	6440	6530	4160	4560	2910	3380	2120	2290*	1920	9.48	
0 m			8500 *	8500 *	10030	6070	6290	3950	4430	2790	3320	2070	2530*	1990	9.22	
-1.5 m	7310 *	7310*	10920 *	10920 *	9890	5950	6180	3850	4380	2740			2950*	2180	8.69	
-3.0 m	9960 *	9960*	14670 *	11800*	9880	6020	6210	3890	4450	2810			3720*	2590	7.85	
-4.5 m	14280 *	14280*	12330 *	11890	8610*	6230	6120 *	4120					4940*	3470	6.58	

CX235C LC. Version Standard arm. 2.94 m arm length, 0.90 m³ bucket, 600G shoes, max reach 9.51 m

9.0 m								2930 *	2930 *					2490*	2490*	6.17
7.5 m								3980 *	3980 *	2850 *	2850 *			2190*	2190*	7.71
6.0 m								4430 *	4430 *	4020 *	3470			2090*	2090*	8.66
4.5 m			4990 *	4990 *	5680*	5680*	5000 *	4900	4610 *	3360	2980*	2380	2080*	2080*	9.22	
3.0 m			10960 *	10960 *	7890*	7360	6050 *	4660	5050 *	3220	3800	2310	2150*	2080	9.49	
1.5 m			8870 *	8870 *	9600*	6850	6940 *	4390	5020	3070	3720	2240	2290*	2030	9.48	
0 m			8500 *	8500 *	10440*	6470	6990	4180	4890	2950	3670	2190	2530*	2100	9.22	
-1.5 m	7310 *	7310*	10920 *	10920 *	10470*	6350	6870	4080	4840	2900			2950*	2310	8.69	
-3.0 m	9960 *	9960*	14670 *	12860	10020*	6420	690	4120	4910 *	2970			3720*	2740	7.85	
-4.5 m	14280 *	14280*	12330 *	12330 *	8610*	6630	6120 *	4350					4940*	3670	6.58	

* Hydraulic capacity 87%

CX235C SR



Standard Equipment

ENGINE

Isuzu 4-cylinder turbodiesel in line
Certified Tier 4 interim (CEGR)
Electronic fuel injection
High pressure common rail system
Variable geometry turbo charger
Cooled Exhaust Gas Recirculation (CEGR)
Diesel Particulate Diffuser (DPD)
(Diesel Oxidation Catalyst DOC + Diesel Particulate Filter DPF)
Neutral safety start
Auto-engine warm up, emergency stop
Glow-plug pre-heat
Idle System:
Auto-idle
One-touch idle
Idle shut-down
EPF (Engine Protection Feature)
Dual-stage fuel filtration
Dual element air filter
Remote oil filter
Green plug oil drain
500-hour engine oil change interval
Refuelling Pump

HYDRAULICS

Auto power boost
Auto swing priority

Auto travel speed change
Selectable work modes
Overload warning device
SWC - SWING RELIEF CONTROL
SSC - SPOOL STROKE CONTROL
BEC - BOOM ECONOMY CONTROL
AEC - AUTO ECONOMY CONTROL
SEC - SWING ECONOMY CONTROL
ISO pattern controls
Pre-set auxiliary pump settings
Switch controlled auxiliary selection
10 x auxiliary flow settings in memory
Auxiliary valve
Auxiliary pipe brackets
5,000 hour hydraulic oil change interval
1,000 hour hydraulic filter change interval
Hydraulic track adjustment
SAHR brake

UPPERSTRUCTURE

4-point isolation mounted cab (fluid and spring)
Common key vandal locks
Swivel guard belly pan
Rear view safety camera

ATTACHMENT

Standard boom 5.70m

Arm 2.40 m HD
EMS bushings
Bucket linkage with hook
Boom mounted work light (70 watt)
Auxiliary pipe brackets
Centralized lube bank
Attachment cushion valve
Arm and boom regeneration
Safety valves on boom and arm cylinders with overload warning device

OPERATOR STATION

Interior dome light (10W)
ROPS/FOPS level 1 cab
FOPS guard OPG level II on cab roof
Pressurized cab
Tempered safety glass
One-touch lock front window
Sun visor & rain deflector
AC/heat/defrost w/ auto climate control
Cup holder & ashtray
Interior dome light
Cloth covered air-suspension seat
Seat-belt
Adjustable armrests
Low-effort controls (short)
Radio mute switch on control lever
2 speakers for radio

Sliding cockpit (100 mm)
Controls pre-wired for auxiliary
Auxiliary select system
Straight travel
Aux-in port for personal electronics
Multifunction color monitor
Rear-view camera
Anti-theft system (start code system)
Rubber floor mat
12-volt electric socket
24-volt cigarette lighter
One-piece right hand window
2 internal & 3 external view mirrors
2 working lights (boom & upperstructure)
Beacon harness
2 cab top working lights
Windshield wiper / washer
Clear (Lexan) roof window w/ sunshade
Storage compartments
On-board diagnostic system

UNDERCARRIAGE

600 mm steel shoes, triple semigrouser
strutted and sealed link
Full overlap turntable bearing tub
Single track guide

Options

HYDRAULICS

Auxiliary Hydraulics -
Single acting pedal activated
breaker circuit
Pedal-activated
multifunction circuit w pressure
control
Pedal activated low-flow circuit

ATTACHMENT

Arm - 1.91 m / 2.94 m
Hydr. or mech quickcoupler
Buckets: Extreme / Heavy duty /
GP / ditching
Hammers, shears, grapples

OPERATOR STATION

Front cab guard - vertical bars
(OPG level 2)

Front cab guard - vertical bars
(OPG level 1)
Front mesh screen
AM/FM radio w/ antenna and
2-speakers
Side-view camera

UPPERSTRUCTURE

Auto centralized greasing system
Rubber bumper guard

(order through Service Parts)

UNDERCARRIAGE

Steel shoes, triple semi-grouser
700 mm, 800 mm, 900 mm:
(swamp)
600 mm Rubber link tracks
Triple track guide

Standard and optional equipment shown can vary by country.

Worldwide Case Construction Equipment Contact Information

EUROPE:

via Plava, 80
10135 TORINO - ITALIA

AFRICA/MIDDLE EAST/CIS:

Riva Paradiso 14
6902 Paradiso - SWITZERLAND

NORTH AMERICA/MEXICO:

700 State Street
Racine, WI 53404 U.S.A.

LATIN AMERICA:

Av. General David Sarnoff 2237
32210 - 900 Contagem - MG
Belo Horizonte BRAZIL

ASIA PACIFIC:

Unit 1 - 1 Foundation Place - Prospect
New South Wales - 2148 AUSTRALIA

CHINA:

No. 29, Industrial Premises, No. 376,
De Bao Road, Waigaoqiao Ftz, Pudong,
SHANGHAI, 200131, P.R.C.

CASE Construction Equipment

CNH UK Ltd
Unit 4,
Hayfield Lane Business Park,
Field Lane, Auckland,
Doncaster,
DN9 3FL
Tel. 00800-2273-7373
Fax +44 1302 802829

CASE Customer
Assistance
00800-2273-7373

The call is free from a land line. Check
in advance with your Mobile Operator if
you will be charged.



NOTE: Standard and optional fittings can vary according to the demands and specific regulations of each country. The illustrations may include optional rather than standard fittings - consult your Case dealer. Furthermore, CNH reserves the right to modify machine specifications without incurring any obligation relating to such changes.

Conforms to directive 98/37/CE



Test it at the CASE Customer Centre Paris!

www.casece.com

