

CX

MINIMUM SWING RADIUS
CX SERIES EXCAVATORS
CX75 | CX135 | CX225

CASE
CONSTRUCTION



CX Series

CUSTOMER SUPPORT

The Case dealer:
Your professional partner

Your success starts with world-class Case machinery and attachments. Your Case dealer will help you work smarter and faster by selecting equipment that delivers performance and operator comfort. Your dealer has the knowledge and experience necessary to help you choose the right attachments so you can...

- Work faster and extend equipment life.
- Increase machine utilization.
- Increase your capabilities.

Let your Case dealer service your machine on the jobsite, so you'll be back on the job faster. Advantages include...

- Responsive jobsite service to keep your equipment running.
- Increase machine uptime.
- Certified service staff and improved parts availability.



CASECARE

CASECARE is an extra protection programme that can be purchased for either 4 years x 4000 hours or 4 years x 6000 hours, whichever comes first. It gives you peace of mind knowing that you will be covered for the time frame chosen. Check with your local Case dealer for more details.

CASECARE is also transferable. If you decide to trade in or sell your excavator during the CASECARE period and as long as you have followed the CASECARE conditions you can transfer the remaining CASECARE to the next owner with the added benefit of a higher resale value.

Ask your local Case dealer about adding value to your machine and peace of mind to your workday with these helpful products. To contact your local Case dealer call 1300 99 CASE.



CX SERIES EXCAVATORS

Performance in a compact package

Case CX Series Minimum Swing Radius Excavators provide outstanding digging and lifting power in tight or cramped working conditions.

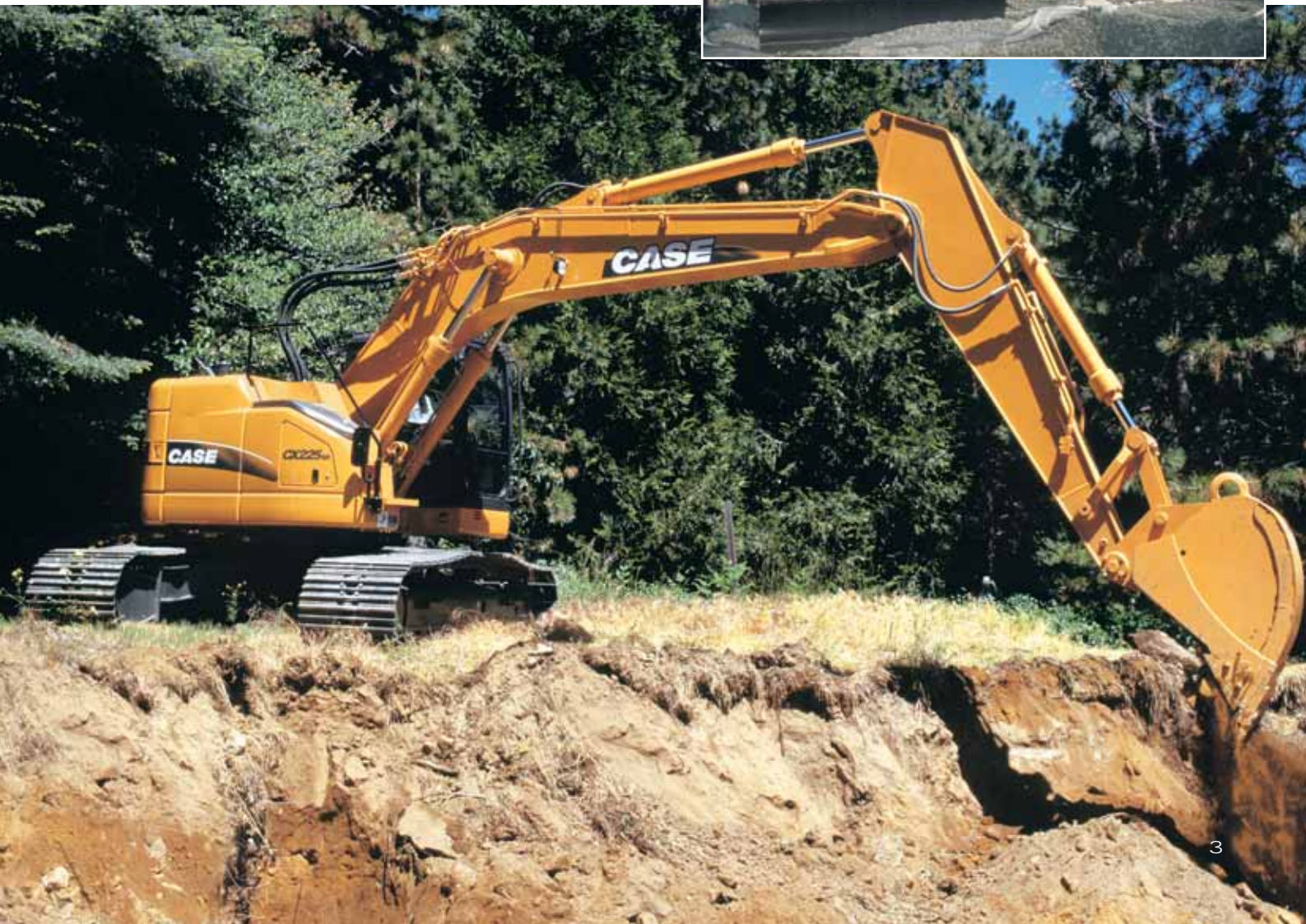
Unlike traditional excavators with prominent rear counterweights, Case CX Series Excavators feature a compact counterweight and boom placement that minimizes the machine's work envelope. The result is a highly productive and manoeuvrable excavator that's ideal for restricted conditions, such as road and bridge work, residential projects and urban construction.

Case excavators are also an excellent choice on wide-open job sites. They bring to the job all the power, digging force and lifting capacity of a traditional excavator.

There are three models in the Case CX Series line: the CX75, CX135 and CX225. The CX75, the most compact model, features an optional parallel offset boom for digging outside the track width, along foundations or walls. The CX225, the largest model, includes the performance of a 20 tonne machine with a work envelope of a 7 tonne, standard-configured machine.

All three models feature large, comfortable cabs with excellent sight lines for a productive working environment. Buckets are interchangeable between excavators and standard CX excavators of similar size.

CX Series Excavators, like all Case products, come with first-class support from your local Case dealer. Financing, insurance, protection plans, service, attachments and genuine Case parts will help you achieve maximum productivity.



CX Series

MINIMUM SWING RADIUS

Tight work radius for cramped work sites

Case CX Series Excavators can manoeuvre onto difficult, restricted sites and perform where standard excavators simply won't fit.

Applications include:

- Urban construction where space is often restricted
- Dig, swing, and load within a single lane of traffic on road and bridge projects
- Manoeuvring between houses on residential sites
- Digging trenches or swimming pools on landscaped lots
- Any job site with numerous obstacles and little space

Case Excavators have swing radiuses as little as 1.2 m, but they deliver the same or better performance as excavators with larger footprints.

The Case models deliver dig depths from 4.54 to 6.7 m. They also have substantial reach, with dig radiuses that range from 6.77 m to 9.73 m. Bucket capacities range from 0.18 m³ on the CX75 to 1.17 m³ on the CX225.

Offset boom for precision digging

The CX75 has the added ability to literally dig right up against a building, lot line or other obstruction thanks to its optional offset boom. The offset boom pivots at a joint between the arm and boom, allowing the bucket to be placed off center for parallel digging even beyond the edge of the machine's own tracks.

This configuration is perfect for trenching directly alongside a building or around an obstacle, or for digging perfectly vertical trench walls for pipe or utility work. It also excels at backfilling with the standard backfill blade. The offset boom also allows for an extremely small work radius of only 2.3 m — one of the tightest in the industry.



Configured to match your application

The excavator is configured to match the application in ways that other excavators can't. The boom foot is positioned close to the swing axis of the machine for reduced swing radius of the front attachment. The counterweight is shortened within centimetres of the outside track edge. This combination creates a tighter work envelope than standard excavators with comparable performance.

Whether working in residential construction along a line of trees, or having to lift and carry within one lane of traffic to eliminate congestion, or just between obstacles, Case Excavators match the application and get the job done.



CX Series

OPERATOR COMFORT & SERVICEABILITY

Cab comfort

Case CX Series Excavators are compact, but the cab on each model offers plenty of room and comfort features to enhance operator productivity.

- Sliding front window provides additional ventilation and an unobstructed view
- Standard heat and air conditioning keep the operator comfortable
- Isomount® system cushions the entire cab from noise and vibration
- Fully adjustable deluxe seat accommodates any size operator
- Swing-out door design allows easy entry and exit.

Excavator controls are ergonomically designed and conveniently placed for ease of operation. Controls include one-touch idle, and one- or two-position mode selector for the greatest

productivity. The CX225 includes a power-boost feature that delivers added muscle required to operate through extremely tough conditions.



Daily service made easy

Quick daily service checks from ground level and extended maintenance intervals keep the Case excavator on the job for more hours throughout the day. And that translates into more profit potential.



Particularly suitable for urban work, these engines have a greatly reduced noise level, one of the lowest fuel consumption rates on the market, and also meet current environmental standards.

The high performance filtration circuits enables engine oil change intervals to be extended to every 500 hours & hydraulic oil interval to 5000 hours.



BUCKETS & ATTACHMENTS

Buckets tailor the machine to the job and attachments add versatility



General purpose (STDP)

A variety of buckets and arms are available to tailor CX Series Excavators to a wide range of job-site needs. Buckets include general purpose, heavy-duty plate lip, extreme duty and ditching models up to 1.2 m³.

The optional hydraulic coupler allows the operator to swap buckets quickly, saving time and boosting productivity.



Heavy-duty (HDP)

Frost tooth buckets cut through frozen ground to extend your work season in colder climates. Add a hammer to increase the versatility of your investment.

Eliminate surface damage to asphalt or concrete by equipping your excavator with rubber link tracks on the CX75 and CX135. Rubber pads that mount to the steel tracks are



Severe-duty (XDP)

also available for all models through Case parts.

See your local Case dealer for more information on the complete line of buckets and options.



Case/JRB hydraulic slide loc[®] coupler



Frost tooth bucket



Hammer



Rubber tracks

MINIMUM SWING RADIUS
CX SERIES EXCAVATOR
QUICK SPECS

CX75

Engine	39.1 kW
Bucket size	0.28 cu m
Operating weight	7681 kg

CX135

Engine	65.6 kW
Bucket size	0.5 cu m
Operating weight	13 285 kg

CX225

Engine	105 kW
Bucket size	0.8 cu m
Operating weight	23 344 kg

FEATURES	CX75	CX135	CX225
Min. swing radius	•	•	•
Offset boom	•	•	
Front blade	•	•	OPT

NOTE: All engines meet current EPA emission regulations.

NOTE: All specifications are stated in accordance with SAE Standards or Recommended Practices, where applicable.

IMPORTANT: Case Construction Equipment reserves the right to change these specifications without notice and without incurring any obligation relating to such change. Availability of some models and equipment builds vary according to the country in which the equipment is used. The illustrations and text may include optional equipment and accessories and may not include all standard equipment. Your Case dealer/distributor will be able to give you details of the products and their specifications available in your area.



Always read the Operator's Manual before operating any equipment. Inspect equipment before using it, and be sure it is operating properly. Follow the product safety signs and use any safety features provided.

Case is a registered trademark of CNH America LLC. Any trademarks referred to herein, in association with goods and/or services of companies other than CNH America LLC, are the property of those respective companies. All rights reserved.



CX75



CX135



CX225

